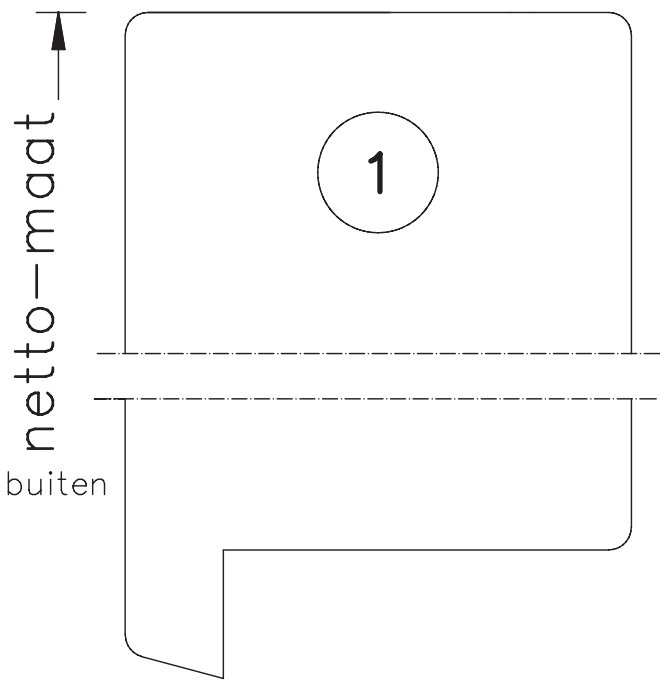
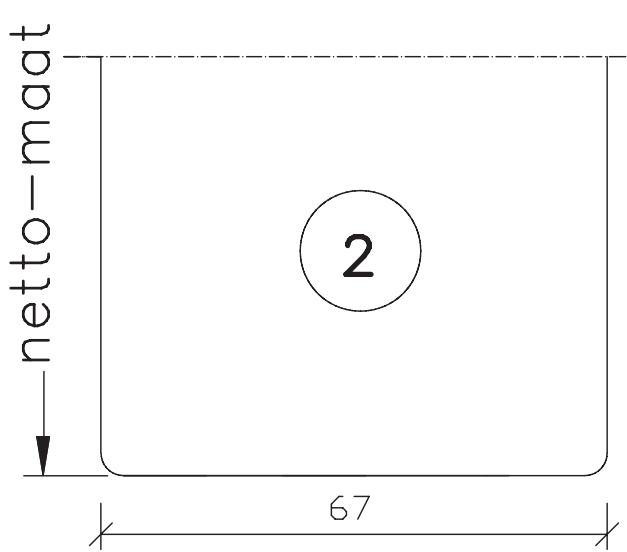
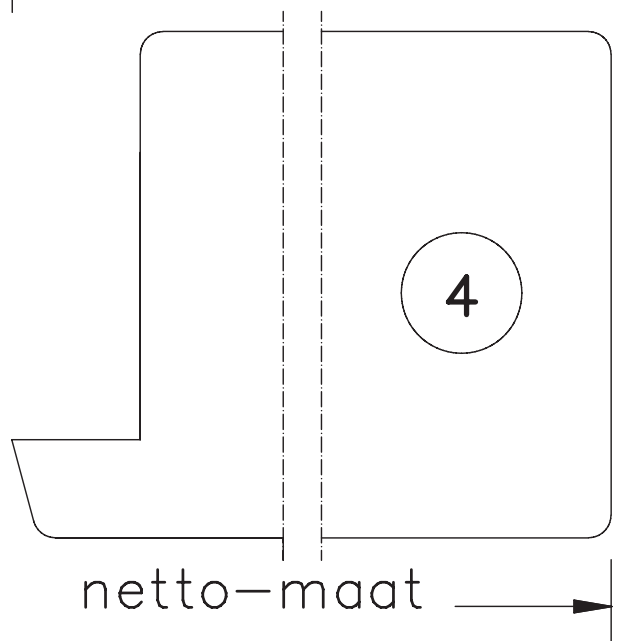
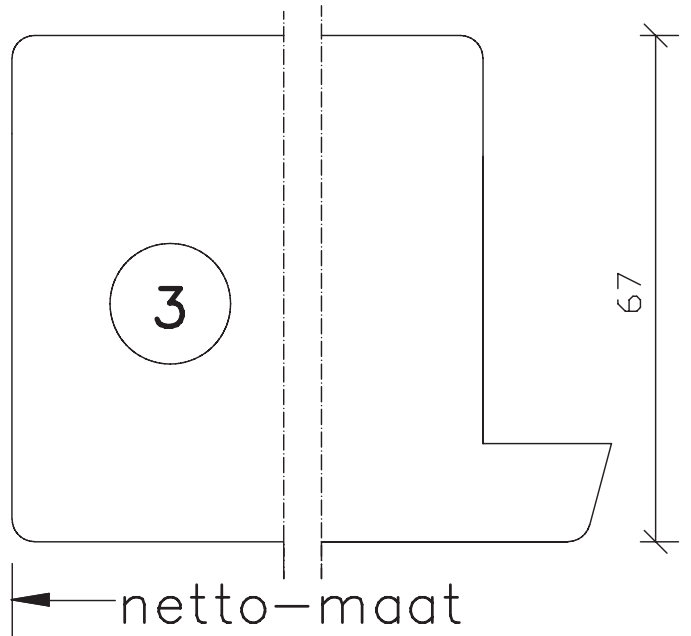
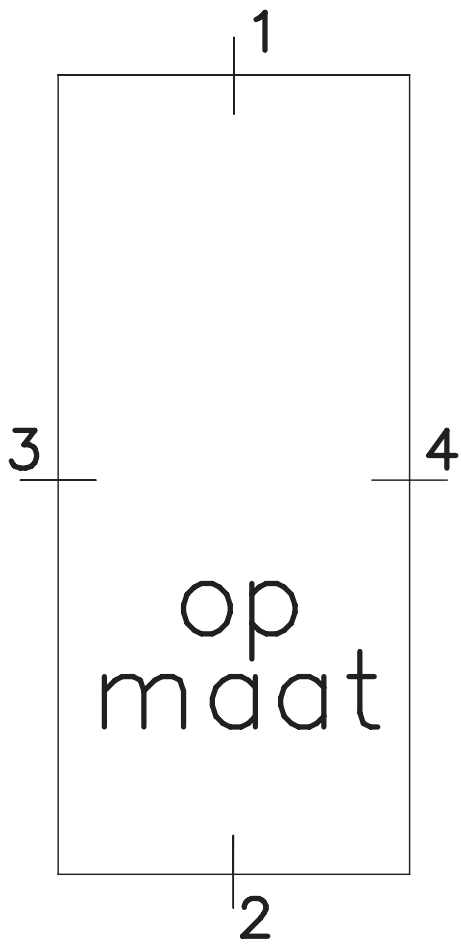


maten  
in mm  
okt.  
2013

Romp  
67mm dik  
binnen en/of  
buitendraaiend

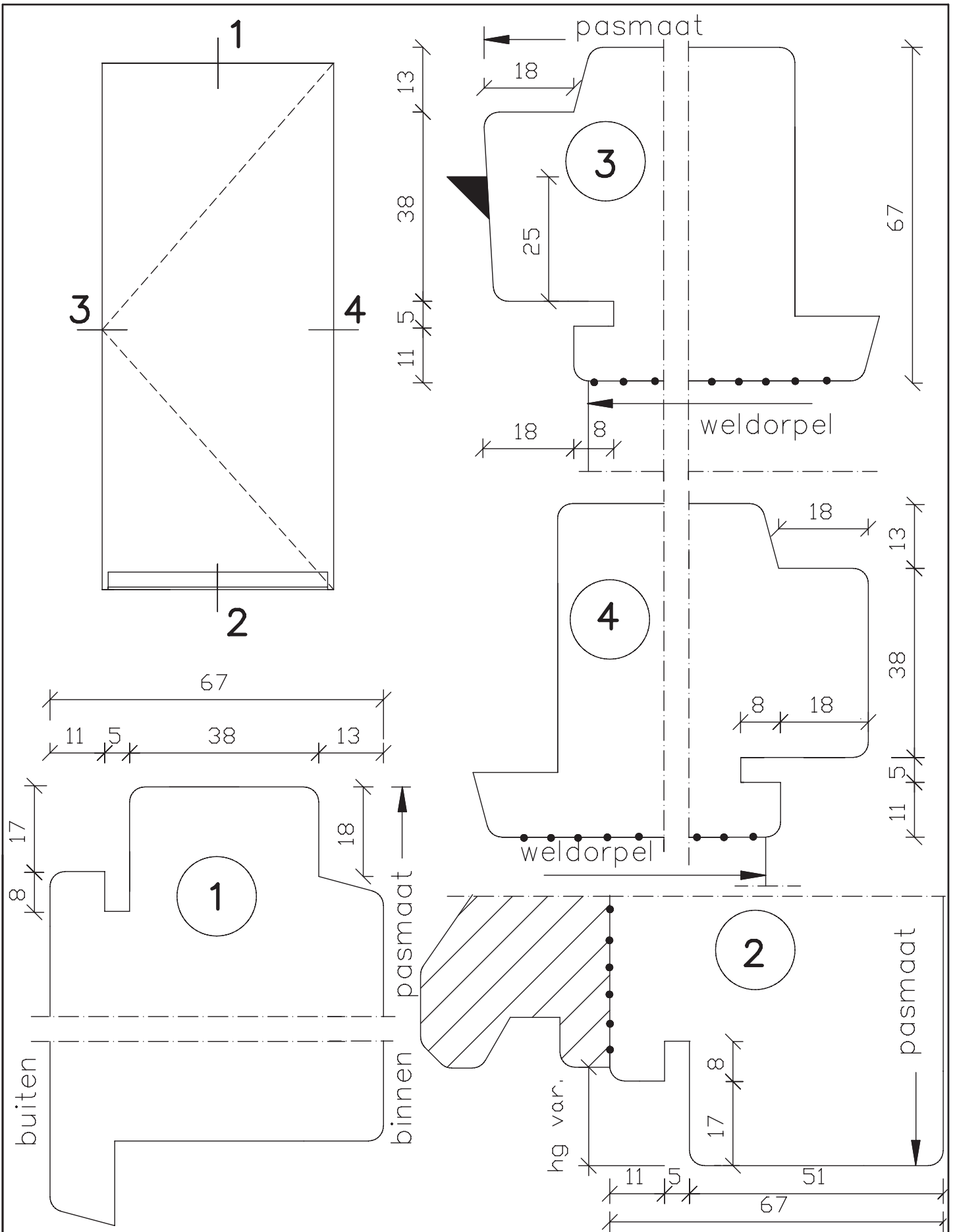
Blad:  
09



maten  
in mm  
okt.  
2013

Op maat  
  
67mm dik  
binnen en/of  
buitendraaiend

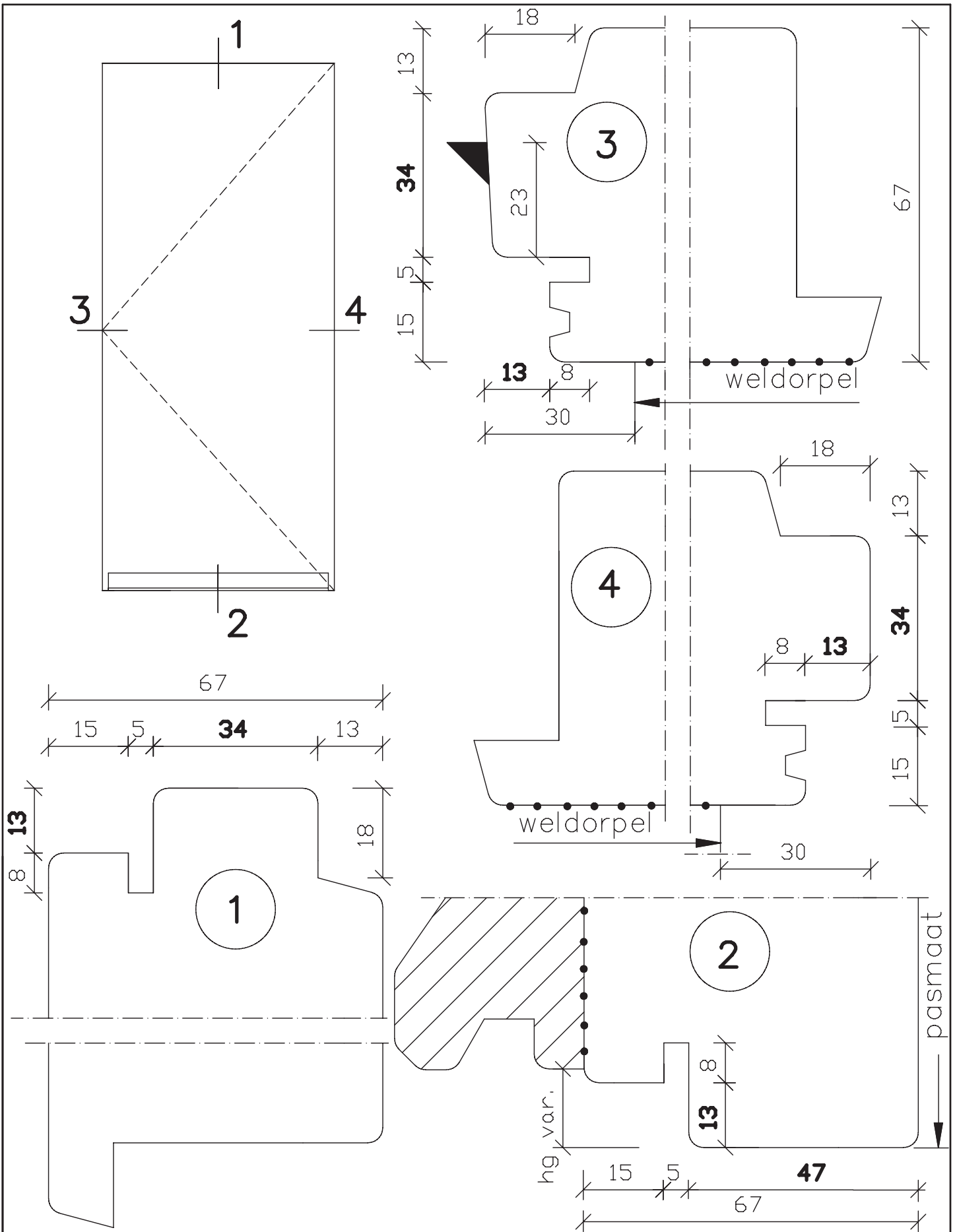
Blad:  
**10**



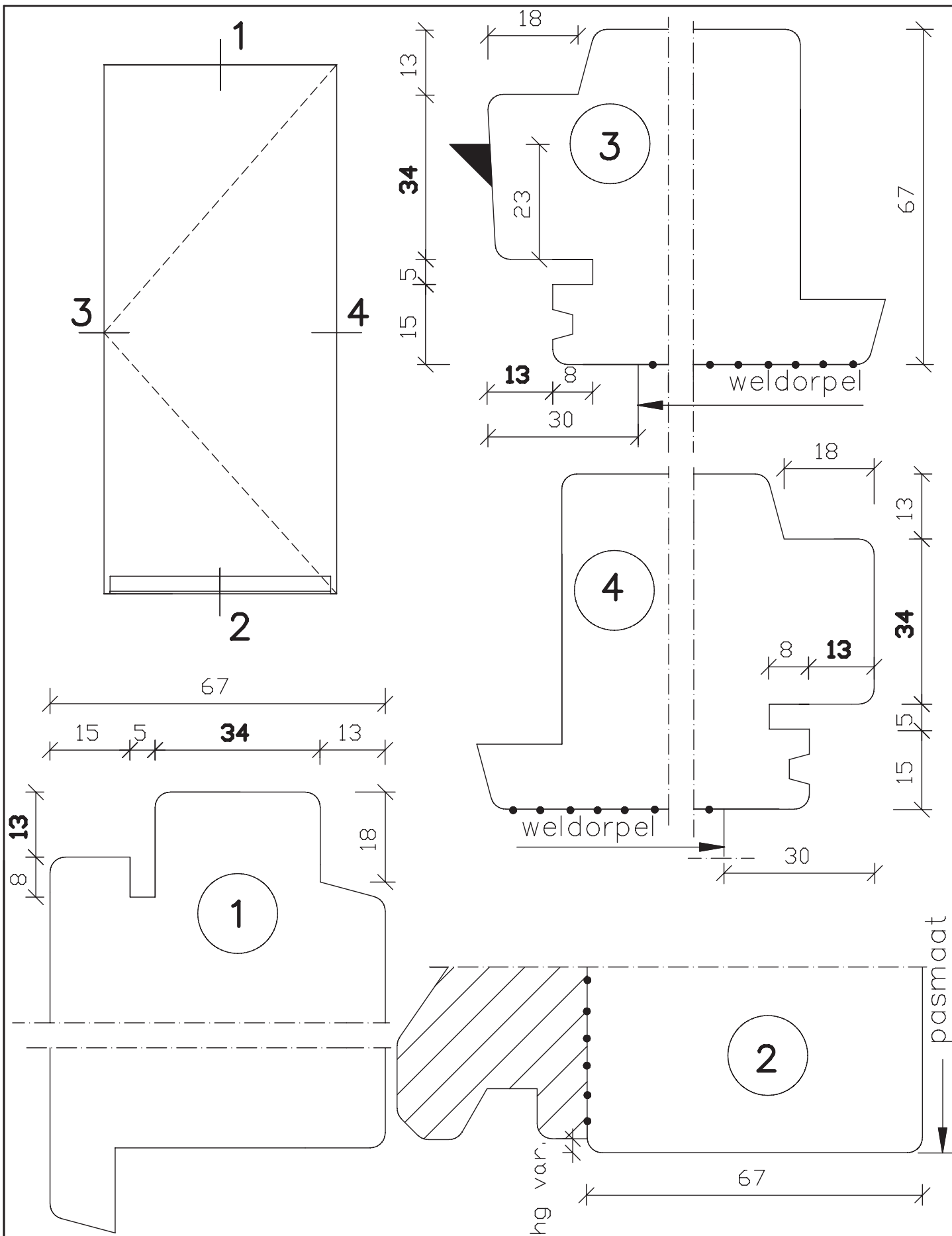
maten  
in mm  
okt.  
2011

pas- en arm  
met kader  
  
67mm dik  
binnendraaiend

Blad:  
**906**



	pas- en arm met kader	Blad: <b>946</b>
maten in mm		
jan. 2012	67mm dik binnendraaiend	

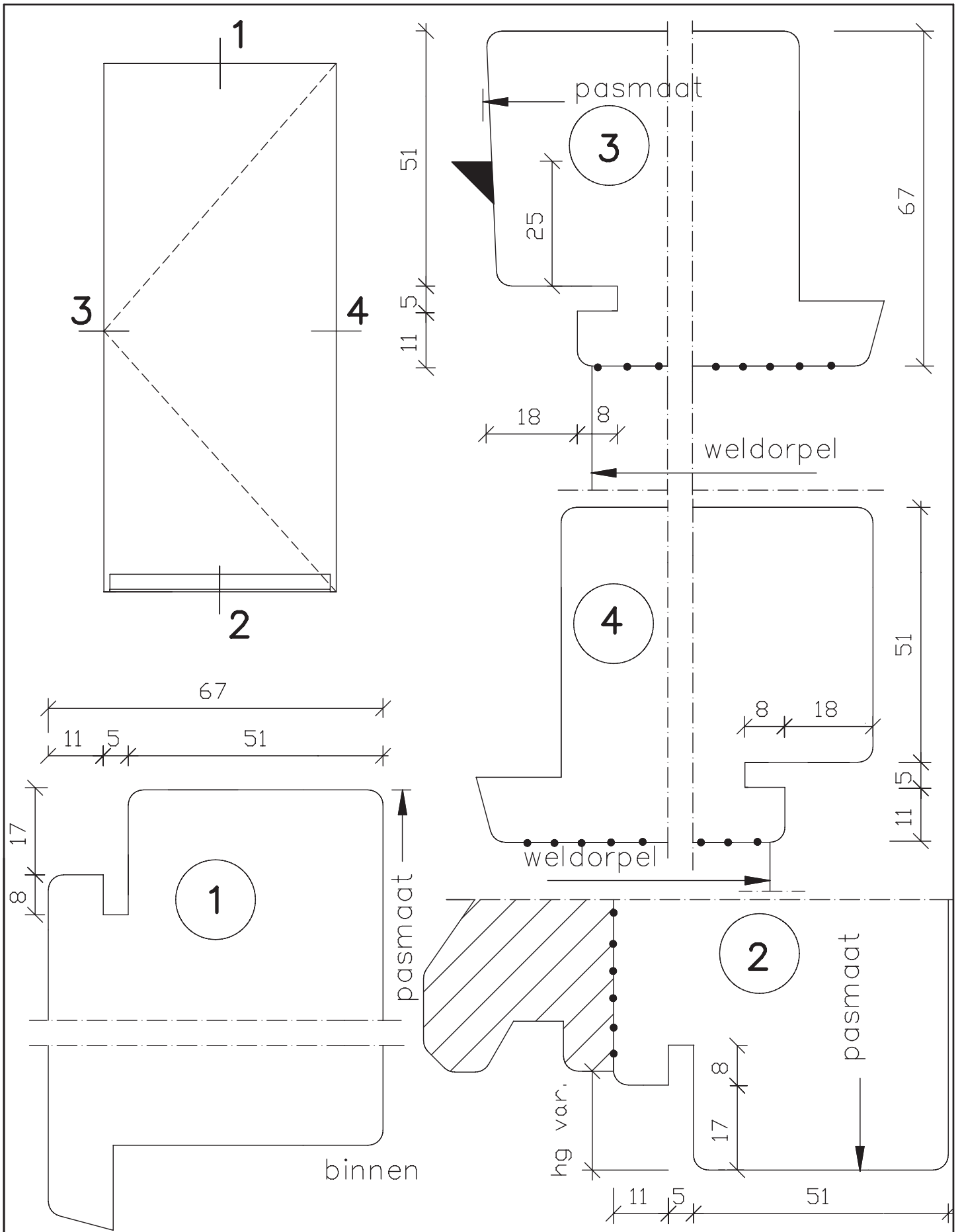


**Deurenfabriek  
Suselbeek b.v.**

maten  
in mm  
nov.  
2013

pas- en arm  
met kader  
  
67mm dik  
binnendraaiend

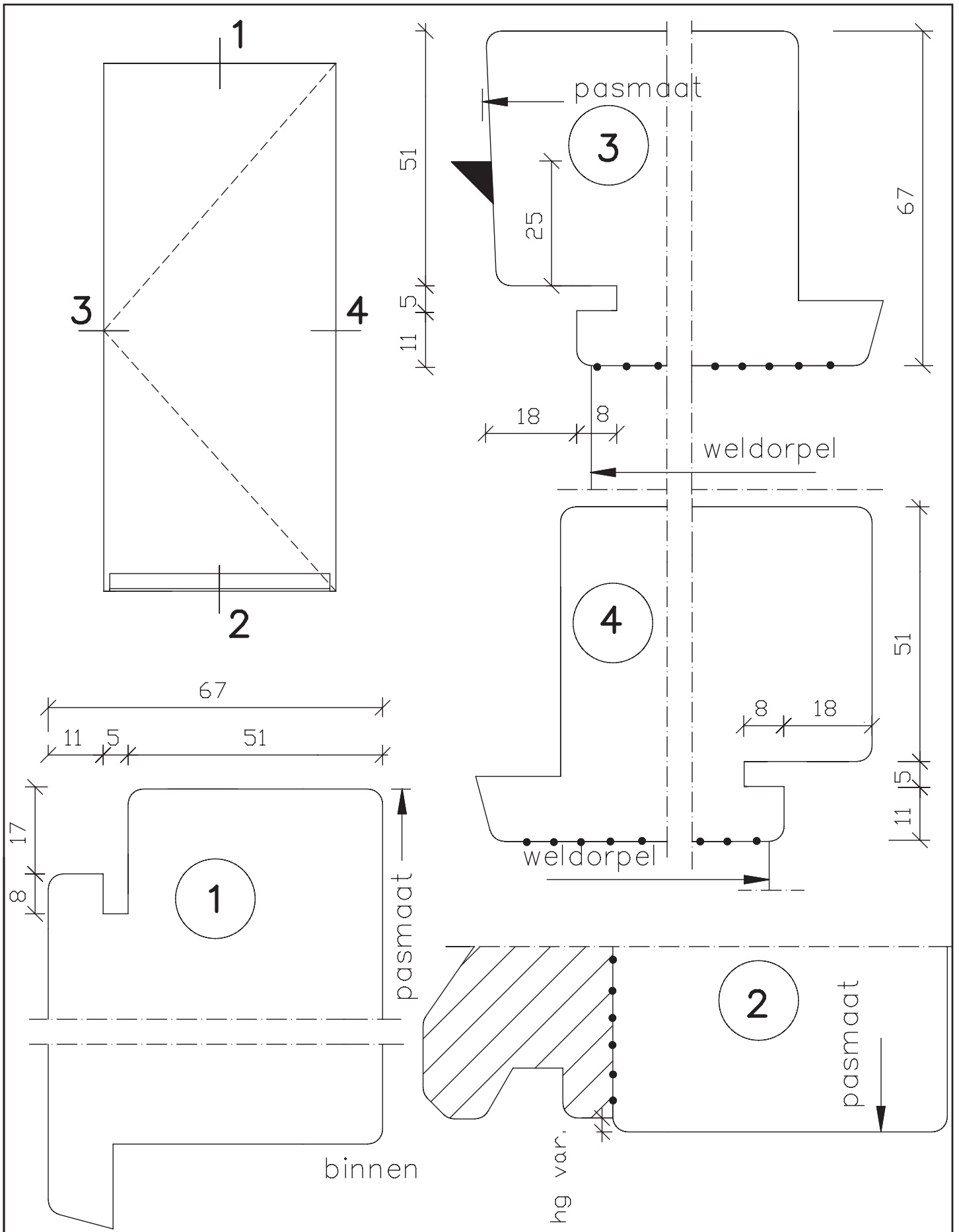
Blad:  
**946**  
S

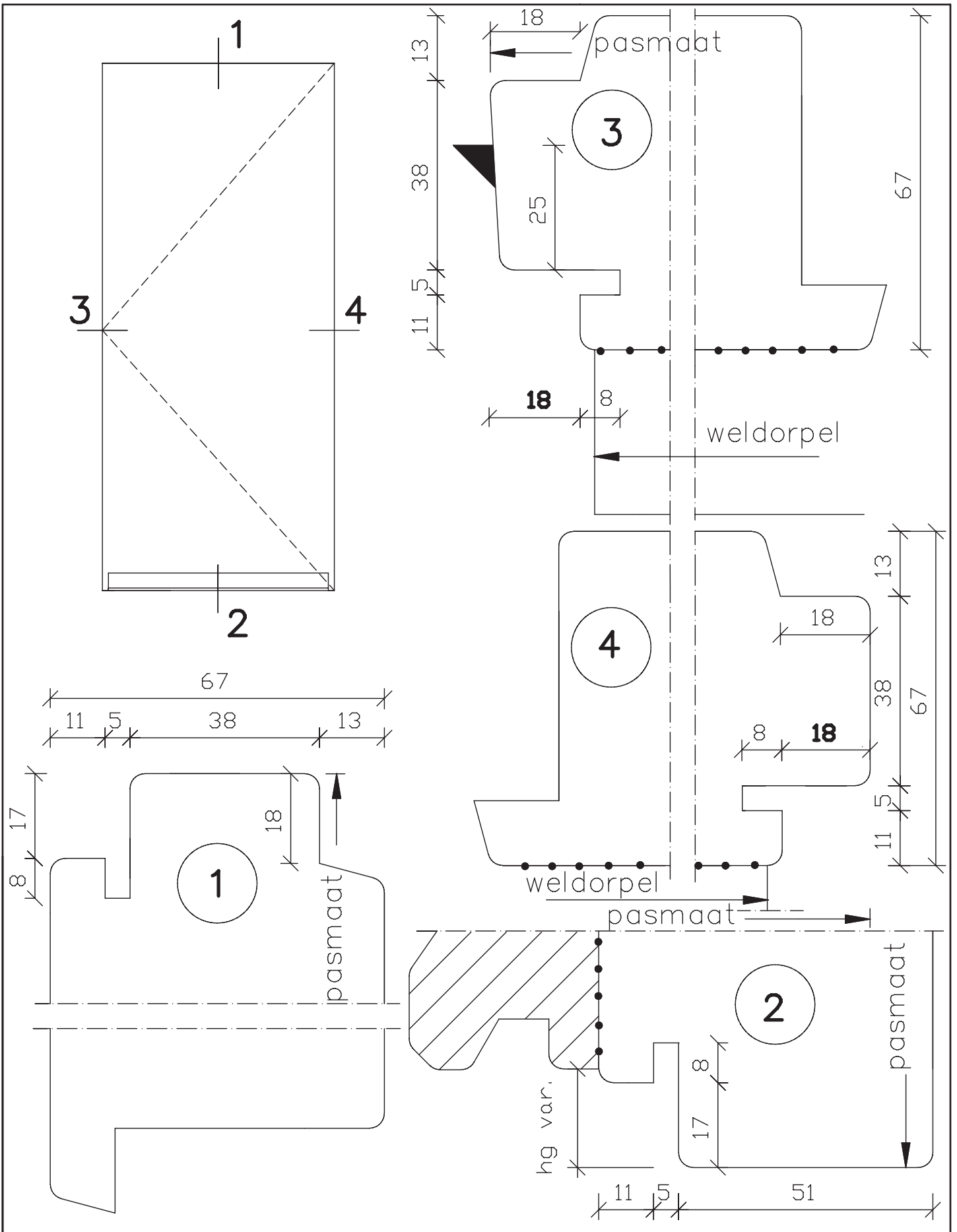


maten  
in mm  
febr.  
2012

pas- en arm  
met kader  
  
67mm dik  
binnendraaiend

Blad:  
**948**



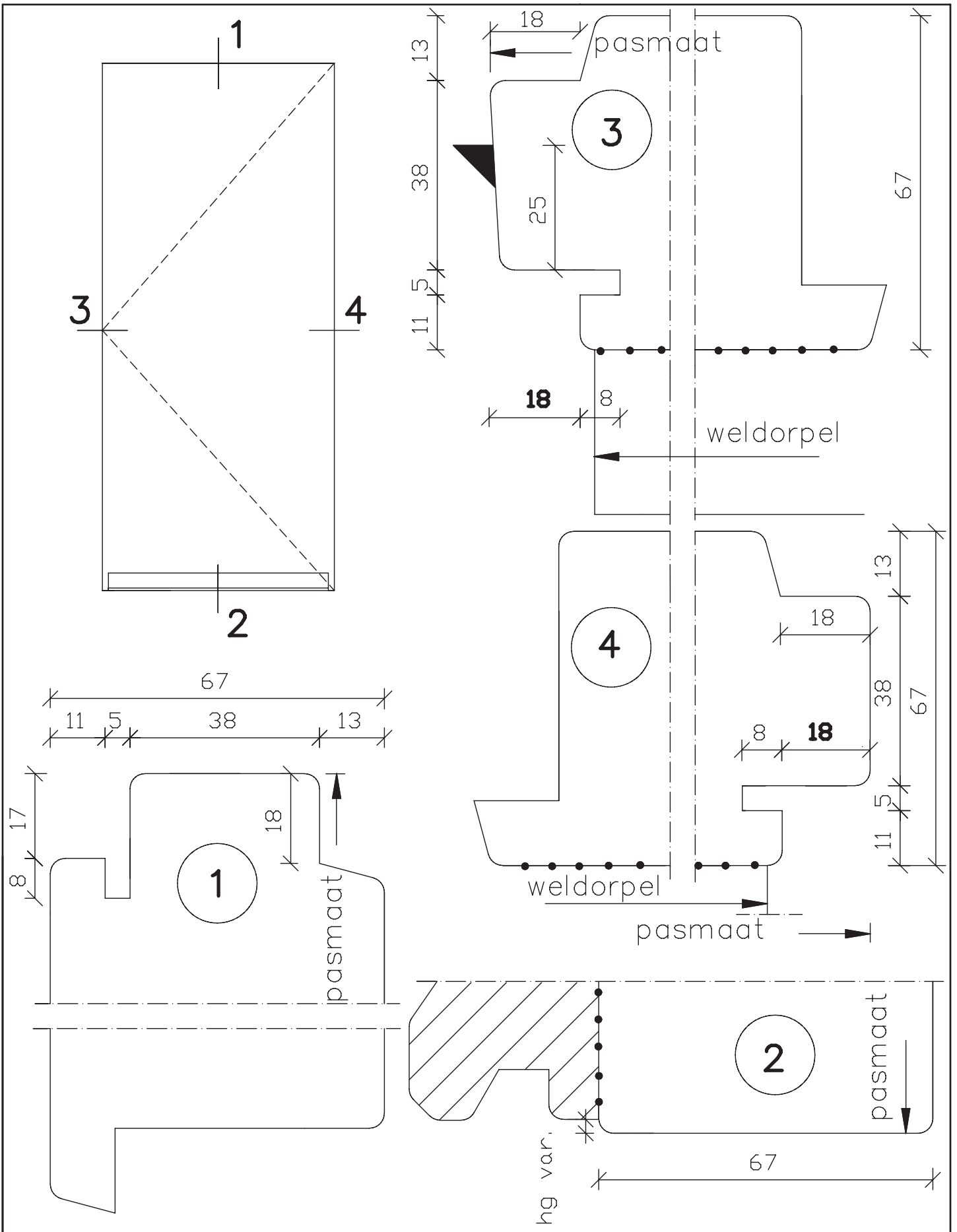


maten  
in mm  
nov.  
2013

pas- en arm  
met kader  
  
67mm dik  
binnendraaiend

Blad:  
**968**

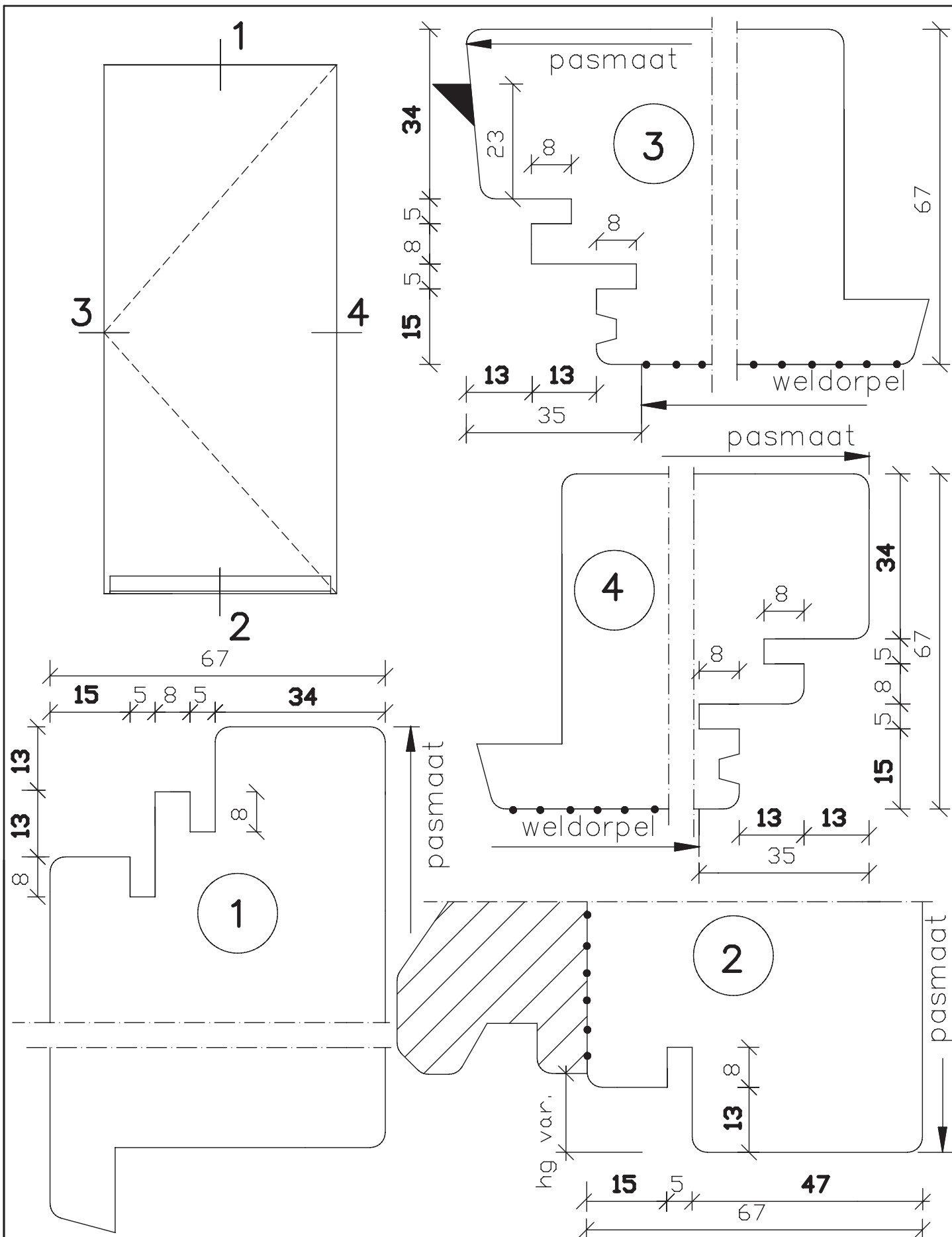




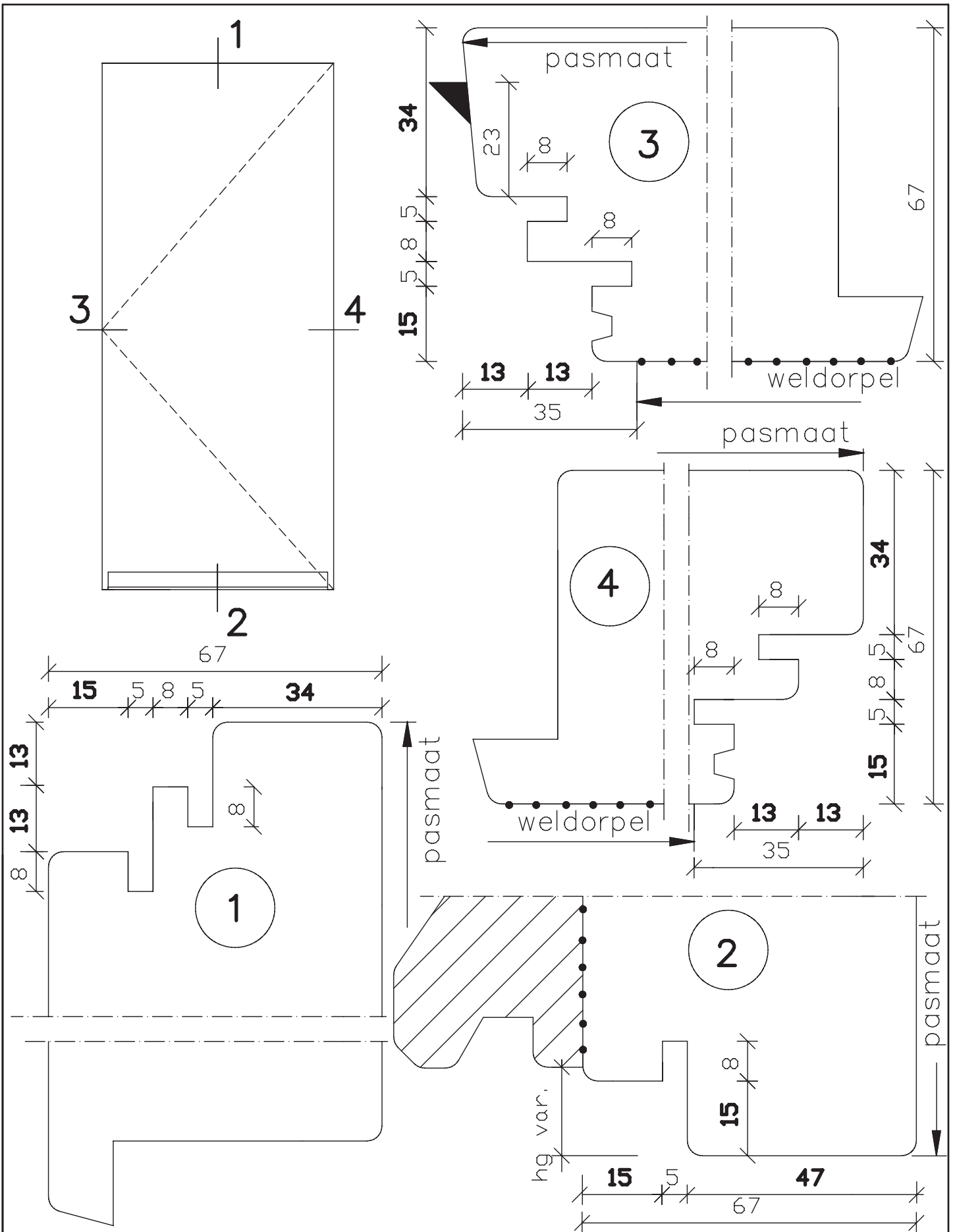
maten  
in mm  
nov.  
2013

pas- en arm  
met kader  
  
67mm dik  
binnendraaiend

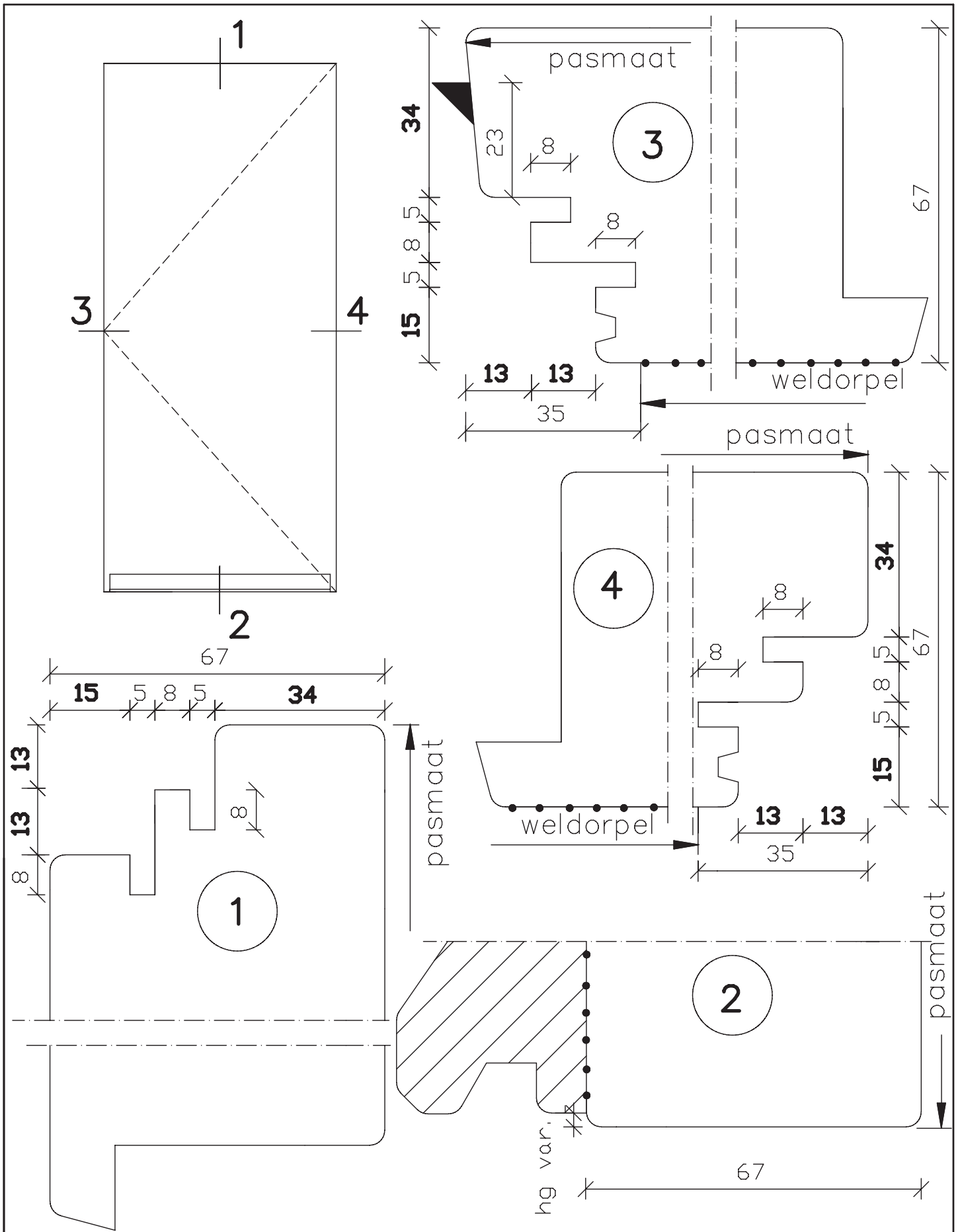
Blad:  
**968**  
S



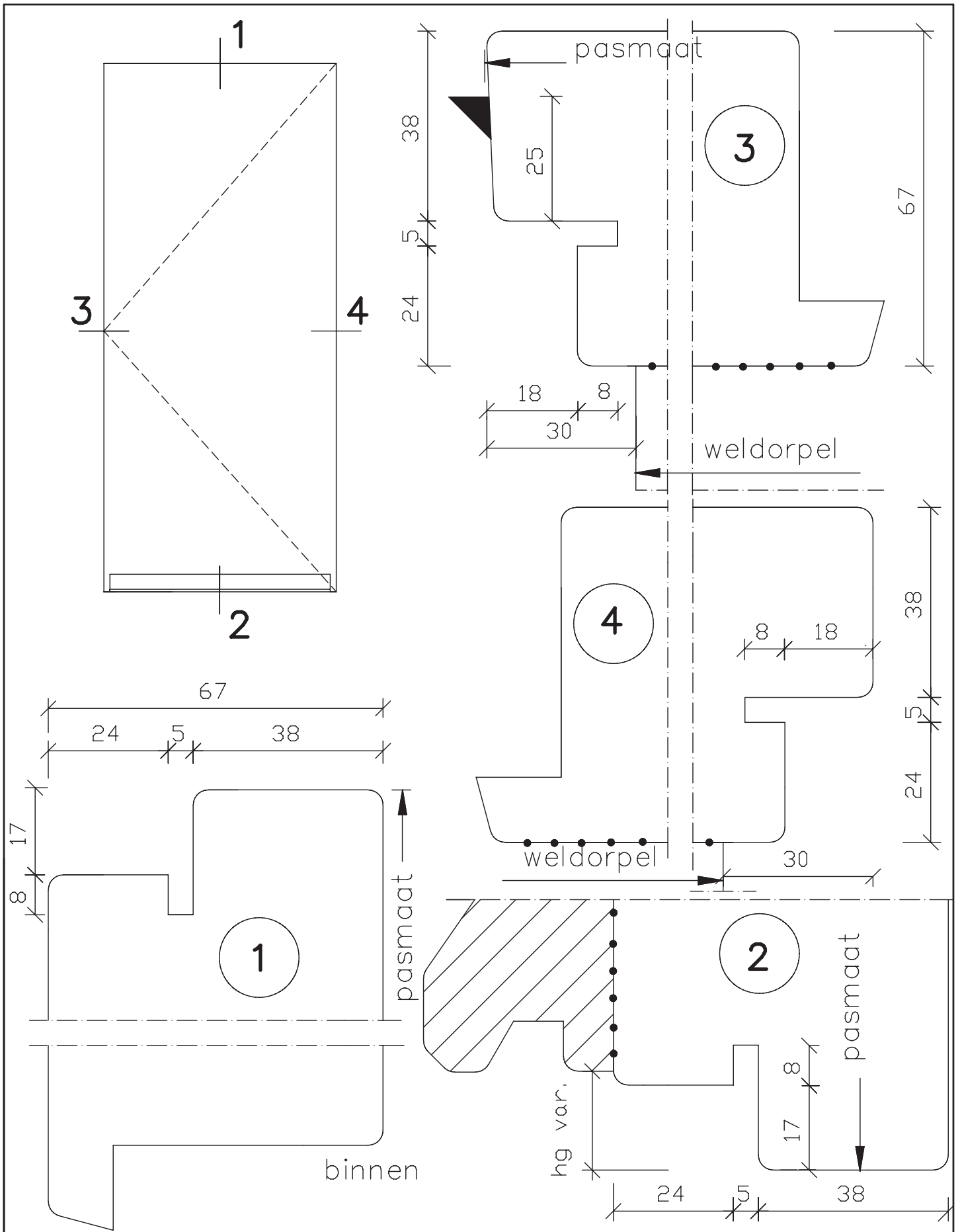
maten in mm	pas- en arm met dubbel kader  67mm dik binnendraaiend	Blad: <b>971</b>



	pas- en arm met dubbel kader 67mm dik binnendraaiend	Blad:
maten in mm		971
dec. 2012		H



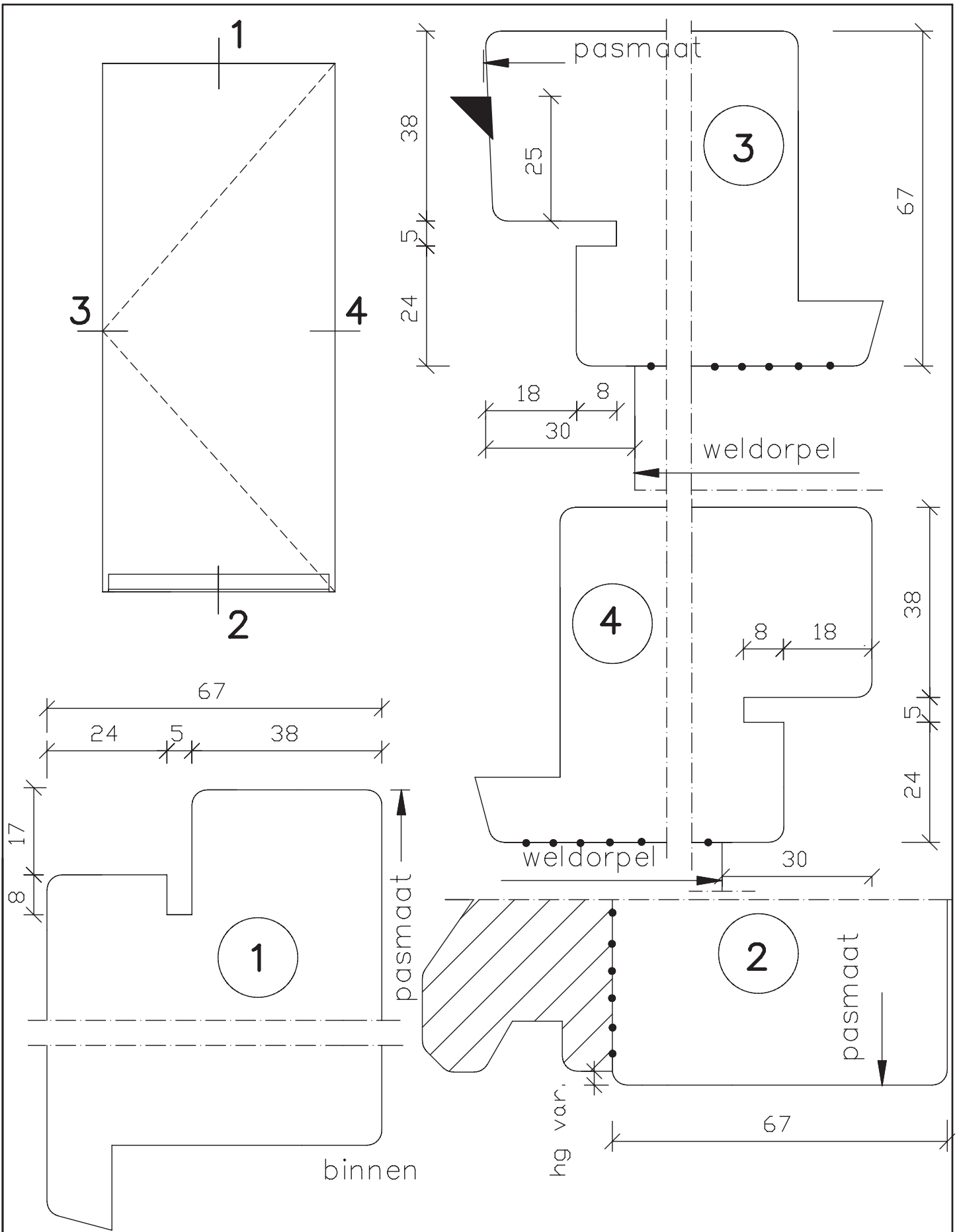
	pas- en arm met dubbel kader	Blad: 971
maten in mm	67mm dik binnendraaiend	S
dec. 2012		



maten  
in mm  
mrt.  
2013

pas- en arm  
met kader  
  
67mm dik  
binnendraaiend

Blad:  
**972**



maten  
in mm  
mrt.  
2013

pas- en arm  
met kader  
  
67mm dik  
binnendraaiend

Blad:  
**972**  
S